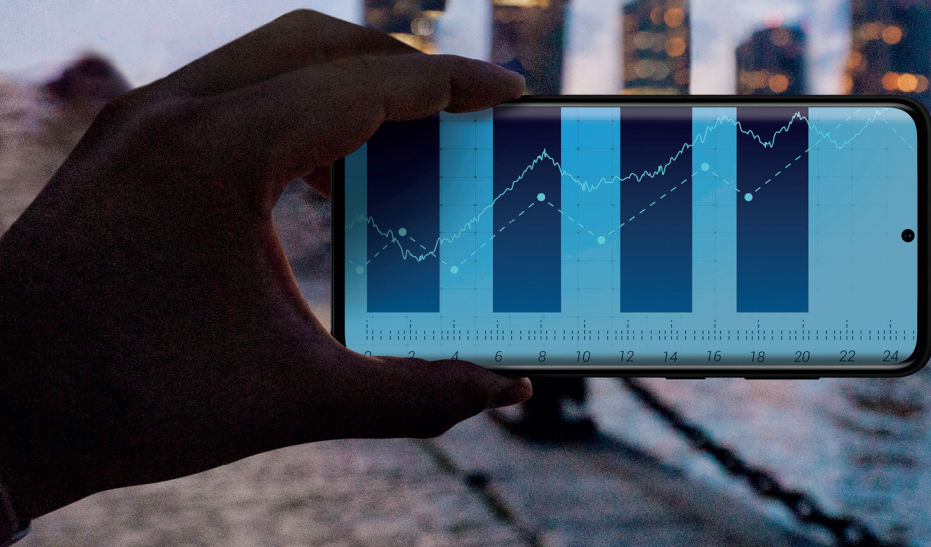


SAMSUNG

Enterprise Edition



Work from your phone wherever, whenever

The best of Samsung, packaged for your business. Galaxy Enterprise Edition is a complete suite of mobile technology and services designed to give you more—more choice, more control and more protection.

It's now easier to configure, update, deploy and run mobile technology across your organisation at scale—helping to ensure your people are always securely connected with reliable technology that keeps your teams working.

3 Year Enhanced Support

Keep your business running with extra support for your devices. Galaxy Enterprise Edition gives you 3 years of enhanced service support, ensuring your mobile technology continues to perform. Our dedicated UK-based Business Services Centre can provide technical support and advice when required.

5 Year Security & Maintenance Release

Keep your business protected from mobile security threats. With Galaxy Enterprise Edition, you get 5 years of firmware updates either monthly or quarterly², so you can be sure all of your mobile devices are up to date with the latest Android and Samsung security and maintenance patches. This helps protect your fleet of Samsung devices against malware, phishing or any software malfunction that might pose a threat to your business.

Should any of your devices
need replacing, we offer a next
business-day replacement service.¹



1. Doorstep exchange with Samsung gold stock. 2. 5 years from first global launch for S20 and S21 Series, Note20 Series, XCover 5, Tab Active3. 4 years for all other devices.

Knox Suite

Knox Suite is an all-in-one offering which includes Knox Manage, Knox E-FOTA, Knox Mobile Enrolment and Knox Asset Intelligence. With Knox Suite, you get everything you need to make your IT team's life simple, and your employees as productive as they can be.

Enterprise Edition includes a Knox build by Samsung to get you started and options to further enhance your security and control. Deploy a new device, remotely, in just minutes, with all the settings, apps and company branding you need.

Galaxy Enterprise Edition is available across a range of industry-leading mobile devices, to suit every seniority, need and budget.



Galaxy S21 Ultra 5G

The most business-focused smartphone, that provides you a seamless experience in or out of the office.



Galaxy XCover Pro

The hardworking, sleek rugged business phone for your teams, that's easy to use and hard to break.



Galaxy Tab Active Pro

The highest performing rugged tablet with Samsung Dex and the highly responsive S-Pen.

Many devices also offer dual or hybrid SIM functionality—helping your people achieve a better work/life balance by allowing them to switch off the business side after business hours.
